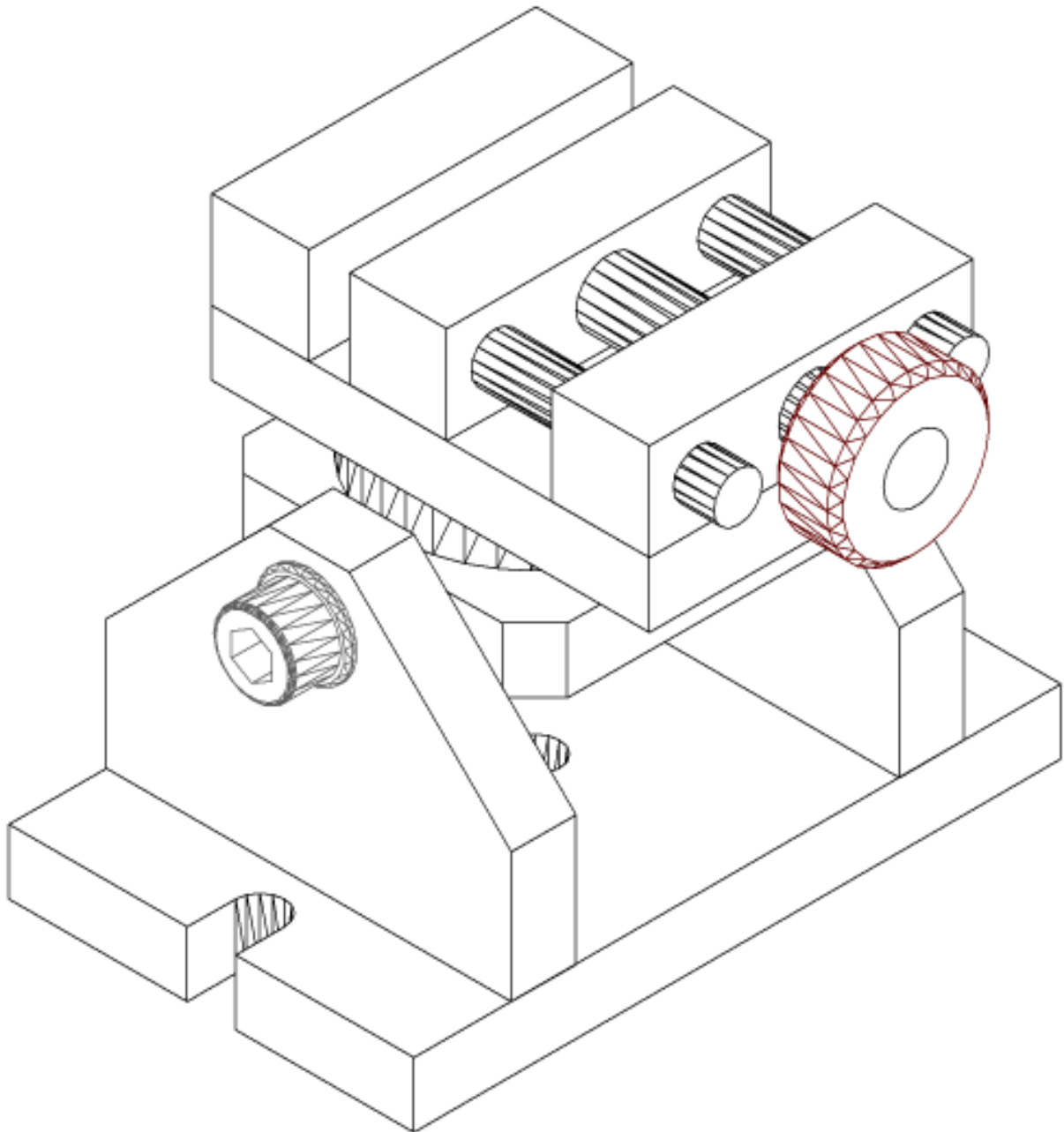
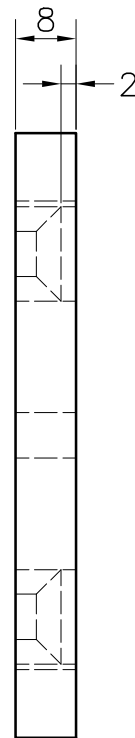
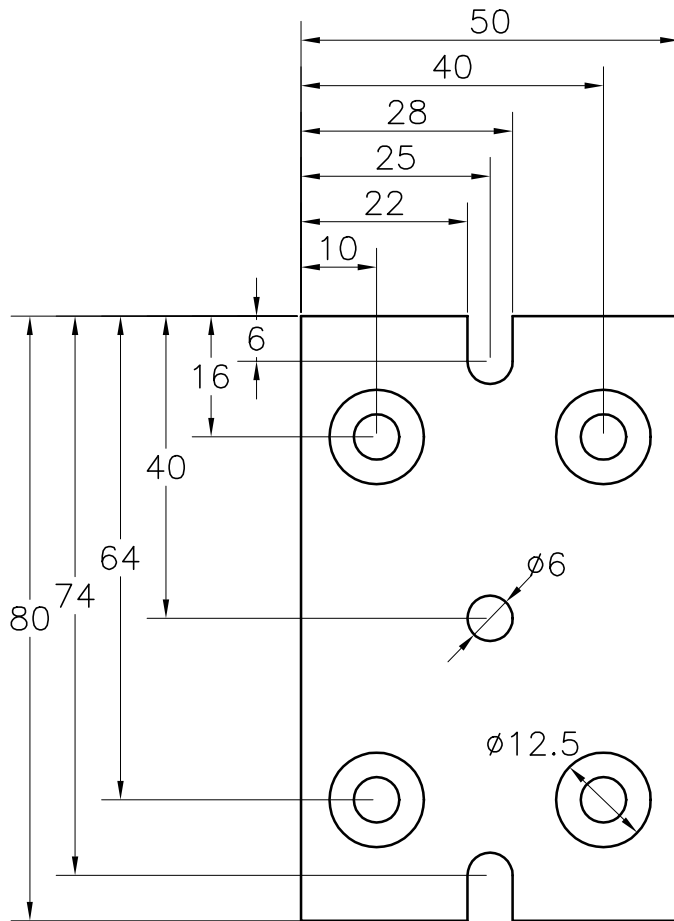


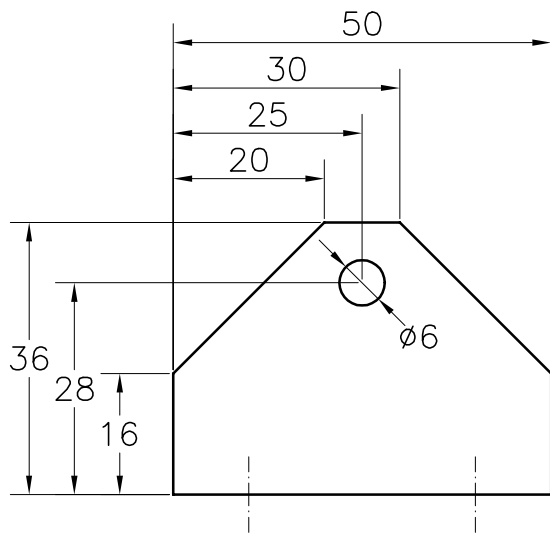
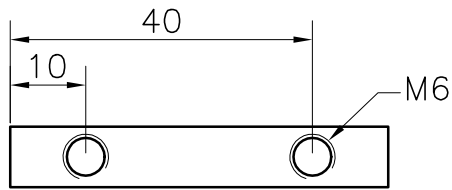
# Kipbar lille maskinskruestik



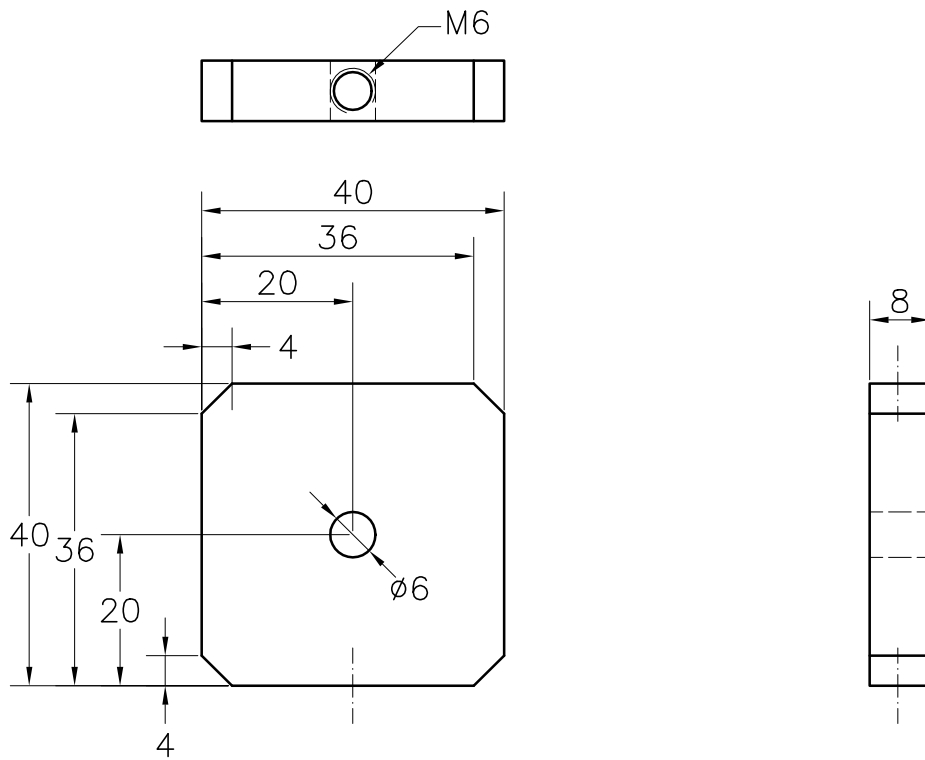
Max Jens Jensen 16-12-2010



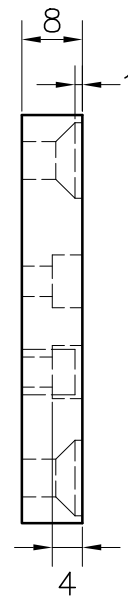
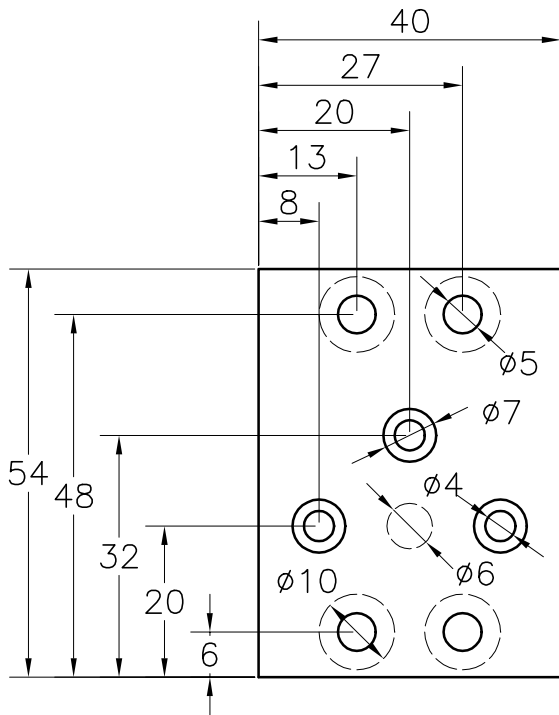
Materiale: 8 mm alu plade	Antal: 1	Tegnet af: MJJ
Beskrivelse: Bundplade, lille kipbar skruestik		
Dato: 20101216	Skala: 1:1	Tegning: 100010



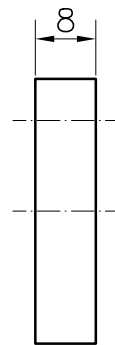
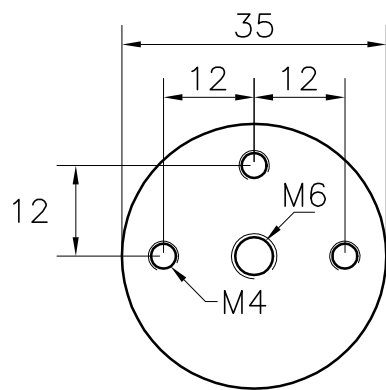
Materiale: 8 mm alu plade	Antal: 2	Tegnet af: MJJ
Beskrivelse: Sideplade, lille kipbar skruestik		
Dato: 20101216	Skala: 1:1	Tegning: 100020



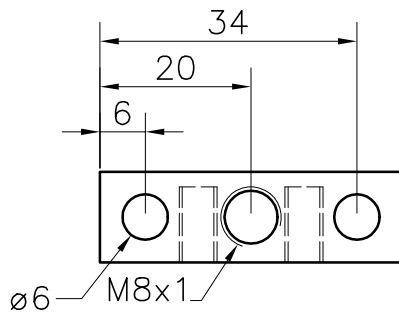
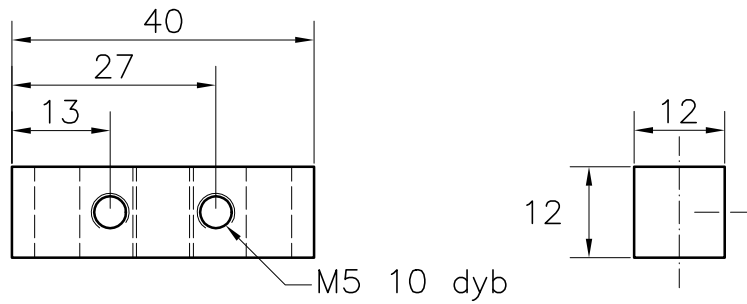
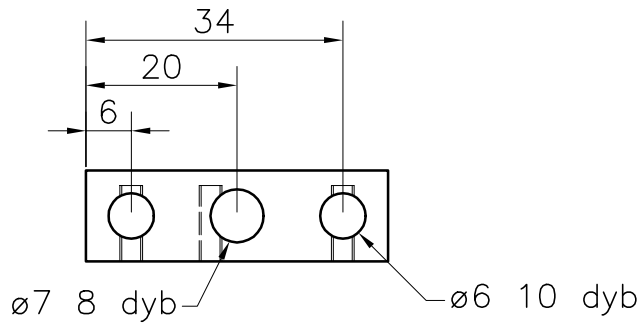
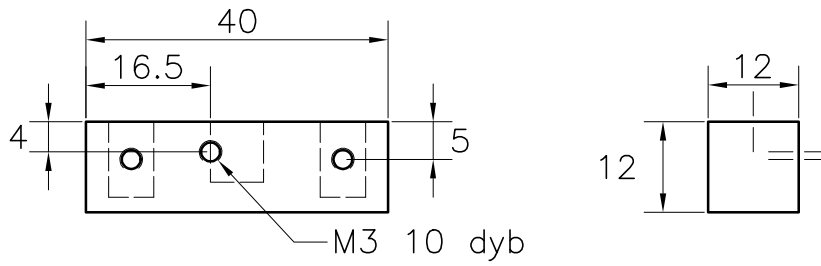
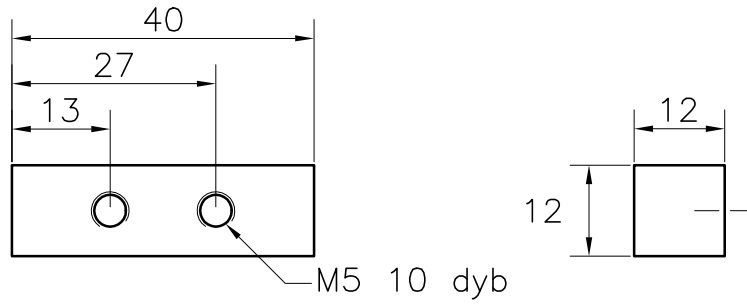
Materiale: 8 mm alu plade	Antal: 1	Tegnet af: MJJ
Beskrivelse: Mellemlade, lille kipbar skruestik		
Dato: 20101216	Skala: 1:1	Tegning: 100030



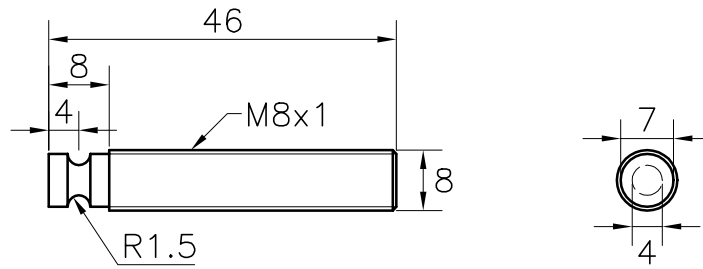
Materiale: 8 mm alu plade	Antal: 1	Tegnet af: MJJ
Beskrivelse: Bæreprade, lille kipbar skruestik		
Dato: 20101216	Skala: 1:1	Tegning: 100040



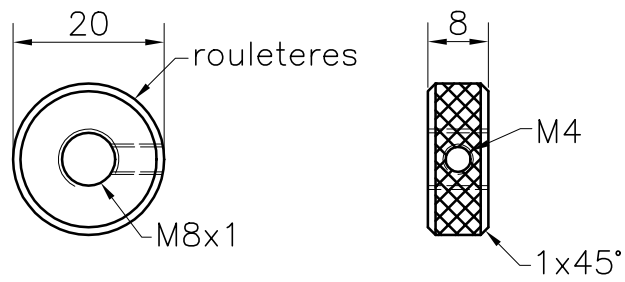
Materiale: Stål	Antal: 1	Tegnet af: MJJ
Beskrivelse: Drejeplade, lille kipbar skruestik		
Dato: 20101216	Skala: 1:1	Tegning: 100050



Materiale: Kilestål	Antal: 1 af hver	Tegnet af: MJJ
Beskrivelse: Kæbedele, lille kipbar skruestik		
Dato: 20101216	Skala: 1:1	Tegning: 100060



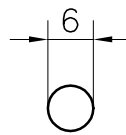
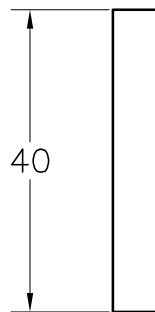
Stål



Messing

Materiale: Messing & stål	Antal: 1 af hver	Tegnet af: MJJ
Beskrivelse: Spindel, lille kipbar skruestik		
Dato: 20101216	Skala: 1:1	Tegning: 100070





Materiale: Stål	Antal: 2	Tegnet af: MJJ
Beskrivelse: Aksel, lille kipbar skruestik		
Dato: 20101216	Skala: 1:1	Tegning: 100080

# Stykliste

<b>Materialer</b>				
<b>Antal</b>	<b>Materiale</b>	<b>Størrelse</b>	<b>Tegning</b>	<b>Tekst</b>
1	8 mm alu plade	8 x 52 x 82	100010	Bundplade
2	8 mm alu plade	8 x 52 x 38	100020	Sideplade
1	8 mm alu plade	8 x 42 x 42	100030	Mellemplade
1	8 mm alu plade	8 x 42 x 54	100040	Bæreplade
1	Automatstål	ø35 x 10	100050	Drejeplade
3	Kilestål	12 x 12 x 42	100060	Kæbedele
1	Automatstål	ø8 x 48	100070	Spindel
1	Messing	ø20 x 10	100070	Spindel (hjul)
2	Automatstål	ø6 x 42	100080	Aksel
<b>Skruer</b>				
<b>Antal</b>	<b>Type</b>	<b>Størrelse</b>	<b>Anvendes til</b>	
4	US UNB	M5 x 16	Kæber på bæreplade	
1	Pinol	M4 x 8	Hjul på spindel	
3	Pinol	M3 x 10	Aksler og spindel i kæbe	
3	CH UNB	M4 x 10	Bæreplade på drejeplade	
1	Sekskant bolt	M6 x 20	Drejeplade på mellemplade	
2	CH UNB	M6 x 20	Drejeplade på sideplader	
4	US UNB	M6 x 20	Sideplader på bundplade	
3	Skive	M6	Sideplade og mellemplade	



